

# *Kingston Parish & Church Magazine*



**August 2017**

### **Village Diary**

Wednesday 2<sup>nd</sup> August

Village Coffee/Tea – Village Hall – 10:30am

Saturday 5<sup>th</sup> August

Village Pub Night – Village Hall, 6pm – 10pm

### **Wheelie bin collection dates**

Wednesday 2<sup>nd</sup> August

Blue and Green bins

Wednesday 9<sup>th</sup> August

Black bin

Wednesday 16<sup>th</sup> August

Blue and Green bins

Wednesday 23<sup>rd</sup> August

Black bin

Thursday 31<sup>st</sup> August

Blue and Green bins

### **Editorial**

School's out and it's time for holidays! During my teaching career, I couldn't get away fast enough. I still remember, however, a former colleague who was working intensely till the last moment, went away immediately, fell into a deep depression and had to cut short his family's vacation. So take it easy is my advice. Decompress from work, savour every bit of going away, and pack some great summer reading. If your travels take you down the A14, you'll be interested in the article below. If you are staying home, make sure you relish whatever time-off is coming your way.

Note that in this issue is a new "Exchange and Mart" section. Following readers' suggestions this section is intended to advertise items which are available for free, for exchange, or for sale. We're talking small household items – no houses or cars! Please email me with items for next month.

Many thanks to Linda and Charlie for the wonderful cover photo and to Peter Reynolds for the Church Gift Aid centre spread of photos.

Peter Holly   [pjholly45@gmail.com](mailto:pjholly45@gmail.com)   01223 264 556

## Vicar's Letter *Growing the Rural Church*

A summary of research into rural church dispels the myth that faith in the countryside is dwindling.

'*Shaping strategies for mission and growth in rural multi-church groups*' (<http://germinate.net/resources/shaping-strategies-mission-growth-rural-multi-church-groups/>) shows that growth is occurring across the land including in rural parishes like those in the Papworth Team Ministry.



However, it makes clear that growth requires everyone to bring their skills to the church.

Archbishop Justin Welby sounds a chilling warning: "any church that leaves things to the 'professionals' is committing missionary suicide."

In other words, we – the whole people of the churches that make up the Papworth Team – have to hear the words of St Paul which remind us that each of us forms part of Christ's body in this place and this age.

'We have different gifts, according to the grace given to each of us' (Rom 12:6)

So what are the top tips that this new report suggests. It says that growth in rural churches is associated with 'six particular characteristics':

1. an intentional focus on mission and evangelism, beyond a focus on Sunday worship;
2. a culture of personal and corporate discipleship within congregations;
3. a committed group of lay people leading a range of activities and events, with easily accessible training and support available;
4. a redirection of time and energy, particularly but not exclusively for clergy, from administration and building maintenance to outreach, service and evangelism;
5. an approach to ordained ministry in which discerning, nurturing and equipping the ministry of lay people within the body of Christ is one of the highest-priority areas of work for the clergy, backed up by appropriate training and support;
6. co-operation and collaboration within and between different multi-church groups, and ecumenically wherever possible.

Our team has many lay people playing their part, from cleaning to leading worship.

Have you thought what your gifts may be? It does not have to be high profile, it need not take up lots of time. But as one of our supermarkets reminds us every day: 'Every little helps'.

If you feel you could do something to help grow our churches, talk to one of the ministry team or your churchwardens. All offers gratefully received.

***Geoff Dodgson***

## Church Services for August

**Sunday 6<sup>th</sup> August      Holy Communion 8.30am**

**Sunday 20<sup>th</sup> August      Family Service 10.30am**

## Church cleaning

1 <sup>st</sup> Sunday	Peter & Suzy Stokes
2 <sup>nd</sup> Sunday	Donal & Monica O'Donnell
3 <sup>rd</sup> Sunday	Linda Rimmer
4 <sup>th</sup> Sunday	Janet Clear
5 <sup>th</sup> Sunday	Peter Reynolds

## Church flowers and brasses

6 <sup>th</sup> August	Joan Reynolds
13 <sup>th</sup> August	Kay Forsythe
20 <sup>th</sup> August	Linda Smith
27 <sup>th</sup> August	Lee Steele

## Home Communion

If you cannot get out and would like to receive Holy Communion at home please let the office know and we will arrange for the sacrament to be brought to you on a regular basis. If you are having difficulty getting to church, but a lift would make that possible please contact the team office on 01480 839933 and we will be able to help.

## Village Workday 19<sup>th</sup> August

There are a few jobs that need doing, at the playground and around the village. We would be grateful for some volunteers! Meet at the Village Hall at 10.00am. Hopefully we will be all finished by lunchtime.

***Peter Stokes***

## Arrivals

A warm welcome to Ian and Jaqueline Smith who moved into The Barn on Field Road at the end of June. Happily we are not losing Nigel and Pat Hillyard who renovated and were living in The Barn until mid-June. They have moved back to Paynes Farm where they lived on first moving to Kingston.

***Linda Rimmer***

## Welcome to Kingston

You will note elsewhere in this magazine the arrival of Ian and Jaqueline Smith who have moved into their new home on Field Road. They've come to the right place. As the last two weekends have testified (with the Village Barbecue and the Church Gift Day and Village Cream Tea), this is a surprisingly bustling and thriving community. One thing I heard at the Barbecue was that some twenty years ago Kingston was cited in the Cambridge Evening News as an example of a village in sad decline. It had lost its school, its pubs, its shop, its post office and its character. It was the last attribute on this list that was off the mark. Whether the article moved enough good people to act or whether regeneration was happening already, the villagers took it upon themselves to make Kingston a great place to live. When Kay and I moved from America (stopping temporarily in Haslingfield) we made the best mistake of our lives. When we settled in Kingston, we were buying the house not the village. We had no idea what came with our purchase. We were delighted when we realized that we had bought into a real **community** and have been so impressed with the friendliness, hospitality and breadth of activities that the village has to offer. What with the recent weekend activities, the monthly pub nights and coffee mornings, and the new church events being announced in this issue, there is plenty to become involved in for all Kingstonians. So, again, welcome Ian and Jaqueline, you've chosen well!

*Peter Holly*

## Dog Walking & Home Boarding

- Dog walking

I offer a flexible service from a one - off walk to regular daily walks.

- Home Boarding

If you prefer your dog to stay in a warm and friendly home during your holidays, then I can provide just what you're looking for at a competitive price.



The Doghouse Caxton

For further details please contact Hannah Hope

[www.thedoghousecaxton.co.uk](http://www.thedoghousecaxton.co.uk)

01954 719057

07522 964975

## County Council Report July 2017

So far it has been an incredible few weeks, extremely busy with inductions, committee sessions, speaking with residents and parishes. There are so many things happening across the County. Very exciting and at the same time challenging.



Lina Joseph  
Cambridgeshire County Councillor

The first week of being elected I started to engage with all my schools. I have been organising meetings with the Headmasters/mistresses in order to understand better where they are and where they are going and how I can support them. Education is essential if we want our society to thrive and it is one of my top priorities.

Road maintenance has been another learning curve and soon I will be going to the depot to visit the contractors and learn how we fill potholes, what materials are used, machinery, etc.

I have included below information regarding services, I hope you find it interesting and useful.

### Highways & road maintenance

I receive reports from officers regarding road closures and maintenance and I share them on my Facebook page. If you would like instant information please do follow me.

Could I please ask parish councils to make all your highways concerns known to me, so I can include them in my spreadsheet to ensure all issues are being looked at and dealt with.

Residents can also report directly any issues in their community, it's very easy and quick. The team is very efficient.

<https://www.cambridgeshire.gov.uk/residents/travel-roads-and-parking/roads-and-pathways/roadworks-and-faults/>

### Fostering

We are corporate parents for 680 children in the county. We are looking for foster parents. Do you have a spare room? Do you want to change the life of a child? Can you look after a child over the weekend? We provide you with training and everything you need.

Unfortunately, if we don't find foster carers in our county we have to send our children across the border.

If you are interested or know someone who might please get in touch.

<https://www.cambridgeshire.gov.uk/residents/children-and-families/fostering-and-adoption/fostering-in-cambridgeshire/>

## Feeling Happy & your mental health

Did you know 1 in 6 of us in the UK struggle with mental health issues at any one time. Take a look at this link and find more about mental health and well being.

<https://www.cambridgeshire.gov.uk/residents/be-well/health-improvement/feeling-happy-and-your-mental-health/>

You can also have a free NHS health check

Not only do NHS Health Checks tell you whether you're at higher risk of getting type 2 diabetes or if you already have the condition, it can also spot early signs of heart disease and stroke.

If you're aged between 40-74 and do not currently have a long-term health condition you should have an NHS Health Check every five years. It's a short 20-30 minute check on blood pressure, weight, cholesterol and the lifestyle factors that influence your health. Those over 65 will also be told the signs and symptoms of dementia to look out for.

## Recruitment innovations recognised for value for money

An innovative campaign to recruit social care professionals has seen Cambridgeshire County Council and LGSS scoop an award for best value for money at the 2017 Public Service People Managers' Association (PPMA) awards.

Faced with a rising number of vacancies across social care services and a significant cost of employing agency staff to meet demand, Cambridgeshire County Council sought a different approach.

LGSS's human resources teams worked with public sector jobs website Jobsgopublic to design and create a dedicated campaign website to attract social care professionals to Cambridgeshire. Caroline Adu-Bonsra, LGSS HR Business Partner for Cambridgeshire County Council said: "LGSS are committed to finding the right solution to meet our customer's needs, and this award reflects the new and innovative approach we have taken in recruiting social care professionals for the county council."

By completely rewriting job descriptions and using social media and online advertising to target social care professionals, the campaign website was viewed over 10,000 times in six months, resulting in 46 new starters to date with many more currently proceeding through interviews.

## Greater Cambridge City Deal

Earlier this week, the Google Transit travel-planner started using live location information fed directly from Cambridgeshire Connect's information centre, funded by the City Deal.

Almost all buses in Cambridge now have GPS sensors installed on them. The sensors beam each bus's location back to a central computer hub, where the location data is processed.

Noelle Godfrey told the Smart Task & Finish Sub-Group at its meeting last night that that's where the clever bit takes place! She and her team have created computer programmes

and algorithms that analyse the location data, look at where each bus is, how fast it's moving, compares that to known trends, and then calculates the predicted time when it will arrive at each stop along the way.

That's going to be incredibly useful to bus-users in the City and County. Until now, systems like Google Transit just used the published Cambridgeshire bus timetables, so if a bus was late or held up in traffic, it's predicted time of arrival was wrong. Now, the computer programmes can take account of live changes, and make vastly more accurate, live predictions. Noelle and Dan Clarke have been on the street, testing the results over the last few months, and we were told that they've been really good.

Google Transit doesn't create the information itself, it has to get it from somewhere else. And from now on, we'll be feeding it with much more accurate information than it had before.

This information will cover Cambridge, South Cambridgeshire and in fact the whole of the County.

**Dates:**

19th July Joint Assembly City Deal Cambourne District Council

26th July Executive Board meeting Guildhall

Just to remind you that the public is welcome to attend County Council meetings. You can find all the details in the website, along with the agenda and supporting documents.

As always I welcome your questions and comments on the foregoing and any other local or strategic matter in which you are interested.

Mob: 07402351821 Email: [Lina.Joseph@cambridgeshire.gov.uk](mailto:Lina.Joseph@cambridgeshire.gov.uk) Facebook: Cllr Lina Joseph

# Bourn Proms 2017



15<sup>th</sup> Year!



## THANK YOU!

*A huge thanks from Bourn Primary Academy to all performers, sponsors and supporters of this year's Proms which raised £1000!*





## **Jane Austen's 'Emma' at Sunnyside, Great Eversden**

**7:30 PM - 9:30 PM August 11, 2017**

Once again, we welcome DOT Productions to The Eversdens with a sparkling new stage adaptation of the Jane Austen classic 'Emma'.

Please bring your own chairs and, if you wish, come early with a picnic to make an evening of it - if we have rain, the production will still go ahead, so bring an umbrella if it looks like rain!

Emma Woodhouse has the world at her fingertips. Life seems pretty good – if a bit boring – and so Emma decides to spice things up by taking on a protégé, Harriet Smith. Although determined never to marry herself, Emma immediately decides to find Harriet a husband and sets about playing Cupid with the village men. When her carefully laid plans unravel and lead to consequences she never expected, Emma learns life doesn't always go the way you want it to!

With its imperfect yet charming heroine and unique view of relationships Emma is often seen as one of Jane Austen's most celebrated works. In this bicentennial year of Jane Austen, DOT Productions brings its renowned style to 'Emma', a comedy of manners that is sure to delight.

Tickets £12 in advance from John & Lori Abraham at Sunnyside (tel 01223 263226) or £15 on the door. To purchase tickets on-line, copy the following link into your browser - <https://www.ents24.com/cambridge-events/sunnyside/emma/4961809>

## **ICE Summer Festival- Sustainable Food Festival**

**26 August 8.00am – 2.30pm**

at University of Cambridge Institute of Continuing Education

Madingley Hall, Madingley, CB23 8AQ

Celebrating the best in local artisan food and produce, from butchers and bakers to local gin makers, this pop-up farmers' market allows you to experience taste sensations and then purchase to enjoy at home. With talks and demonstrations throughout the day. Free to attend.

Breakfast served from 8.00am-11.00am, BBQ lunch from 12.00-2.00pm.

[www.ice.cam.ac.uk/SummerFestival](http://www.ice.cam.ac.uk/SummerFestival) 01223 746222.

Date	Title	Bourn	Kingston	Caxton	Longstowe
<b>Aug 6</b>	Trinity 8	10.30am FHC	8.30am HC		
<b>Aug 13</b>	Trinity 9			10.30am MP	8.30am HC
<b>Aug 20</b>	Trinity 10	8.30am HC	10.30am MP		
<b>Aug 27</b>	Trinity 11	10.30am FW		8.30am HC	10.30am MP
<b>Sept 3</b>	Trinity 12	10.30am FHC	8.30am HC	10.30am W4A	
<b>Sept 10</b>	Trinity 13	10.30am W4A	6.00pm EP	10.30am MP	10.30am HC
<b>Sept 17</b>	Trinity 14	8.30am HC	10.30am W4A		
<b>Sept 24</b>	Trinity 15	10.30am Cluster Service at Longstowe for their 800 <sup>th</sup> Anniversary with Bishop David			

HC = traditional Holy Communion (BCP)

EP = traditional Evening Prayer (BCP)

W4A/FS = Family Service

MP= traditional Morning Prayer (BCP)

FHC= Common Worship/All Age Holy Communion

FW = All Age Worship/Morning Prayer/Prayer & Praise/Morning Worship

## Children's World Fun Park

**Wed 9 August - Sun 3 September**

**from 12.00 daily**

at Parker's Piece, Cambridge, CB1 1NA

Children can enjoy endless rides for £7.

## Little Gransden Air & Car Show

**Sunday 27 August 10.00am-5.00pm**

at Little Gransden Airfield,

Fullers Hill, Little Gransden, SG19 3BP

In aid of BBC Children in Need Appeal 2017 and local charities

Over four hours of vintage and aerobatic flying displays, vintage, veteran and classic vehicles plus other attractions.

Adult from £20, Child from £10

from <http://www.littlegransdenshow.co.uk/>



PENN FARM  
PODIATRY

- ✦ Corns and calluses
- ✦ Difficult or painful nails
- ✦ Nail surgery
- ✦ Sports injuries and orthoses
- ✦ Children's feet
- ✦ Diabetes
- ✦ Verrucae
- ✦ Online booking
- ✦ Friendly clinic providing quality care

☎ 01223 782161

✉ [info@pennfarmpodiatry.co.uk](mailto:info@pennfarmpodiatry.co.uk)

🌐 [www.pennfarmpodiatry.co.uk](http://www.pennfarmpodiatry.co.uk)

📍 3a Penn Farm Studios, Harston Road, Haslingfield, CB23 1JZ



The SOCIETY of  
CHIROPODIST  
& PODIATRISTS



## Celebrate the Harvest!

September 30 & October 1, 2017



Let the wealthy and Great  
Roll in splendour and state  
I envy them not I declare it  
I eat my own lamb  
My own chickens and ham  
I shear my own fleece and I wear it  
I have lawns I have howers  
I have fruits I have flowers  
The lark is my morning alarmer  
So jolly boys now  
Here's God Speed the Plough  
Long Life and Success to the Farmer!

Plan now to join Kingston villagers in the Harvest celebration:

- **Scarecrow Contest** – School-age children are invited to create a scarecrow to be brought to the Kingston church by 5pm on Friday, September 29. Judging will be in various categories with prizes to be awarded. Scarecrows will be displayed throughout the weekend.
- **Harvest Church Service** – Celebrate our blessings with thankfulness through worship at the church service - 5:45pm Saturday, September 30, at The Church of All Saints and St. Andrew.
- **Harvest Community Supper** – Join together after the Harvest Service in the Village Hall for a hot supper, one complimentary beverage, and apple pudding with entertainment to follow. A pay bar will also be available. Tickets are pre-sale only and are £10 for adults and £30 for a family. Tickets are limited - must be purchased by September 23; and are available from Linda Rimmer, Linda Smith, and Kay Forsythe.
- **The Church of All Saints and St. Andrew Viewing** – The church will be open on Sunday, October 1, for those who would like to view the Harvest decorations and, perhaps, have a moment of quiet reflection on our blessings in this harvest time and our lovely Kingston village.

**OPPORTUNITY TO SHARE YOUR PUDDING SKILLS!** Anyone wishing to provide an apple pudding (crumble, Charlotte, etc.) would be greatly appreciated. We can provide the apples if needed! Please contact Lee Steele

if you can volunteer an apple pudding for our community supper.

## Gift Day ...

Saturday 8 July was the PCC's biennial Gift Day, featuring our now traditional parachute making, church tower climbing and a finale of fearless teddies and other special toys launching themselves from the church tower. The Parish Council once again kindly organised cream teas in the tranquil setting of the Village Orchard to coincide with



our day and we were delighted to welcome a number of special guests in addition to villagers and friends – Councillors Lina Joseph and Tumi Hawkins, Revd Nigel di Castiglione (Team Rector) and Tim Burgess (until recently our Team Treasurer). Photos of the occasion appear here and on the opposite page.

Donations so far have reached an incredible £5,628 (which is likely to attract an additional £1,350 in Gift Aid tax refunds) – a total of almost £7,000. The PCC is extremely grateful to everyone who donated and joined in the day. If you would still like to contribute it is not too late – just drop your yellow envelope in to me at 1 Field Row. The donations will be split between the General Purposes Fund (or the Restoration Fund where this has been specified) and the Endowment Fund to

balance our short-term needs and long-term sustainability.

Many thanks to everyone who helped to make this such a fun, happy and profitable day.

**Linda Rimmer** (Treasurer)  
on behalf of the PCC





and Cream Tea



## A14 Cambridge to Huntingdon upgrade takes shape

Six months in, new aerial pictures show the first glimpse of a brand new road emerging.



*Outline and temporary bridge for the construction of the new River Great Ouse viaduct.*

The project team delivering the biggest road upgrade under construction in the UK have been sharing an update about ongoing work on site, within the surrounding environment and with local communities.

New aerial photographs were published on Tuesday 4 July revealing how the new road is emerging. Alongside this progress, foundations and bridge columns for some of the project's 34 new bridges have been installed and the team have been giving an update on the industry leading care for the environment that the project is delivering while building the new road.

Work on building the £1.5bn upgrade to the A14 between Cambridge and Huntingdon started in November last year. The project includes widening a total of seven miles of the A14 in each direction (across two sections), a major new bypass south of Huntingdon, widening a three-mile section of the A1 and demolition of a viaduct at Huntingdon, which will support improvements in the town.

### A new road emerges

Barely seven months after work started on the £1.5bn upgrade scheme, the outline for the 12-mile long Huntingdon bypass has emerged through the Cambridgeshire landscape, revealing how much progress has been achieved so far.

Chris Griffin, A14 project manager at Highways England, says:

"We are continuing to make good progress throughout the scheme. We have had mild and dry weather this winter and spring and have been making the most of it to move the project forward quickly and safely.

"I am pleased that the outline for most of the new road's path has now been created and it won't be long before some of our first structures are completed.

"The project's earthworks team has been stripping top soil over more than 17 miles out of the project's total length of 21 miles to create several sections of the future new road including: the Huntingdon bypass, the new Swavesey junction, and the five-mile long

local access road, which will link local communities between Huntingdon and Cambridge without the need to use the A14.”

### **Building a road with its environment in mind**

Chris says:

“From the skies, the outline of the Huntingdon bypass forms a thin brown strip running through the jigsaw of green and yellow fields between Swavesey and the east coast main line railway.

“We are careful to minimise our impact on the surrounding environment while we work, and the environment keeps reminding us that it is all around us too. On a progress visit through the River Great Ouse viaduct site recently, I was joined by an unexpected companion: a heron standing in one of the lakes near the temporary bridge, seemingly surveying the piling team’s work.

“An important part of the project has been the planning of environmental mitigation so that, by the time the project is completed, its footprint on the surrounding natural environment is as small as possible. A team of ecologists is working with wildlife including water voles, great crested newts, kestrels, bats and barn owls, as well as some protected plant species, to create new habitats. More information will be made available as work progresses.

“In addition, the team will replant twice as many trees as have been felled throughout the project by the time it is completed. The trees will be carefully selected to fit in with the existing local environment.”

### **Creating the new road’s building blocks**

Chris continues:

“With construction gathering pace, we have now started tackling some of the biggest challenges on the project and it is exciting to see our innovative plans take shape on the ground, including the foundations and some of the columns for the viaduct on both sides of the River Great Ouse.

“Columns for some of the 34 bridges to be built throughout the project have now started appearing along Ermine Street (A1198), the A1 and at the site of the future, 750-metre long River Great Ouse viaduct. The foundations for the viaduct columns are as deep as 35 metres and are made up of steel-reinforced concrete.

“The piling team has drilled deep under the layers of clay and silt either side of the River Great Ouse to ensure the foundations and the viaduct columns themselves are stable enough to carry the 800 concrete bridge deck panels, weighing 25 tonnes each, on which the new carriageway will be built.”

*View from the River Great Ouse temporary bridge with piling machinery digging the column foundations.*

While the foundations and columns for some of the bridges and the viaduct are being installed, work to cast the concrete panels for the bridge decks, including the 800 needed for the viaduct alone, has also started.



*Bridge deck concrete panels being cast at the on-site casting plant near the Brampton compound.*

The concrete panels are being cast on the construction site, near the Brampton compound, to avoid having to transport them via the road network, further minimising disruption for road users.

Another way in which the project minimises its use of the surrounding road network is through the use of materials from several borrow pits dotted along the construction site. Instead of having to bring in the 5 million tonnes of materials needed to build the road, more than half of it is being supplied from the site itself.

## Exchange and Mart

This is a new monthly section of the magazine in which villagers can advertise items that are:

- To be given away
- To be exchanged
- To be sold

### ***This month:***

Miki Ellar has two items to be given away: a ladies bike and a picnic table. She says that both need to be viewed before any decision is made and that she is happy for any villagers to drop by.

We have a nearly new John Lewis Dishwasher for sale (JLDWS 1202) which has an A+ energy rating. It's white and fits a space of 600mm. We are asking £40. It can be viewed after August 5<sup>th</sup> by calling Peter or Kay



## Kingston Village Hall: update on Phase 2 renovation

In February 2017, the Village Hall Management Committee applied to WREN for a grant of £31K to fully complete Phase 2 of the Hall renovation (upgrading the old, large hall). We were successful in our application and awarded the full amount, dependent on providing duplicate or triplicate quotes (depending on the amount of each piece of work) for the following: replacement wooden floor, installing sound insulation boarding on the west wall, replacing the east window and refurbishing the south window, new curtains to aid sound absorption and retain heat, new ceiling globes and wall uplighters, new efficient radiators, replacement electrical work and painting. We are aiming to retain as much of the original look by retaining the painted walls on three sides of the hall and installing good quality timber boards for the floor. In addition, we will be obtaining a complete set of padded, stackable chairs and new café-style small round and square tables to provide a more comfortable and convivial atmosphere. We are close to submitting the final quotes to WREN and hope that physical work will commence at the end of September (based on contractors' schedules). We will be documenting the progress in the newsletter and the village website during the coming months and look forward to welcoming you all when the work is completed sometime in early 2018. The small hall and kitchen will still be available to use during the work. A large thank you should be extended to the Parish Council for supplying the third party 'deposit' required in such projects.

*Mark Stalham, Chairman, Kingston Village Hall Management Committee*

---

A short, prayerful service of

## Holy Communion

is celebrated

**Wednesday at midday**  
in **Bourn Church**

Anyone from around the Team or beyond is welcome to attend.

---



## The late, great Charlie Gillett

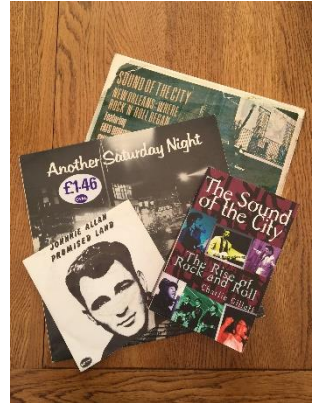
Writing about the author James Lee Burke and his close connection with Cajun music in the June edition of this magazine, I recommended the Ace CD "Another Saturday Night", subtitled "classic recordings from the Louisiana Bayous". What I didn't mention were the origins of this record. It was first published as an LP in 1974 on the Oval label. One track, Johnnie Allan's "Promised Land" (a Chuck Berry number), was released as a single and became a surprise hit in the UK. Described as a one-take hurricane, during the brief recording process, Johnnie Allan missed out a verse, the drummer almost fell off his stool and the guitarist just kept playing amid the turmoil. The man that drove this record to success was Charlie Gillett, co-owner of Oval records and author, musicologist, DJ and broadcaster. Nothing much that was good in the 1970s was released that didn't bear his imprint.

He started in 1971 by publishing his book "The Sound of the City: The Rise of Rock and Roll", a seminal review of the origins and development of rock and roll. As has been said elsewhere, if you just read one book on this subject this is the one to read. Although describing developments across the entire USA, he was particularly knowledgeable and indeed enthusiastic about the music that came out of New Orleans and Louisiana generally. As a result, he issued an LP titled "Sound of the City/New Orleans Where Rock 'n' Roll Began" which was intended to augment and illustrate a section of his book. Released on the United Artists label, this is now a very rare record to find. Gillett himself provided the informative liner notes (as he did with "Another Saturday Night"). He then went on to launch the Oval record label and worked as a DJ on Radio London, Capital Radio and the BBC, over the years popularizing reggae music (including, of course, the music of Bob Marley) and then world music generally. He died in 2010.

Thankfully, available now on two Ace CDs are "Honky Tonk: Charlie Gillett's Radio Picks", a long list of tracks mainly from the 1960s and 1970s that he either played on the air and popularized or produced or promoted. There's not a dud amongst them. Indeed, the track listing is a testament to his taste and influence. Artists included on the two volumes include Jesse Winchester, JJ Cale, Bobby Charles (the original recorder of "See You Later Alligator" who enjoyed something of a renaissance in the '70s), Graham Parker, Kate and Anna McGarrigle, and Dr. John. Gillett also discovered and promoted Dire Straits and Elvis Costello. His main claim to fame in my eyes was his ability to discover unknown tracks that deserved to be classics in their own right. Some examples are "Down on the Farm" by Big Al Downing, "Mary Lou" by Young Jesse and the Cadets and "Third Rate Romance" by the Amazing Rhythm Aces. Find any of those original 45s and you'll be quids in.

In 2002, in association with Gillett, EMI issued a set of five double CDs titled "The Sound of the City: New Orleans, Los Angeles, Chicago, Memphis, and New York". The collection was compiled by Gillett who also wrote the comprehensive sleeve-notes. As usual, the selection of tracks was done with impeccable taste and provide an exhaustive overview of the music emanating from the five chief American centres of musical development. Not an artist himself, Charlie Gillett led many of us down the road to rock and roll salvation.

**Peter Holly**






**CAMBOURNE  
VEHICLE SERVICES**  
The Drift, Boum, Cambridge CB23 2TB

**Tel: 01954 719039**

[www.cambournevehicleservices.co.uk](http://www.cambournevehicleservices.co.uk)  
[info@cambournevehicleservices.co.uk](mailto:info@cambournevehicleservices.co.uk)

- \* SERVICING FOR ALL MAKES
- \* M.O.T's (UP TO 3.5 TONNES)
- \* EXHAUST SYSTEMS SUPPLIED AND FITTED
- \* TYRE SERVICE - SUPPLIED AND FITTED
- \* COURTESY VEHICLE AVAILABLE (BY PRIOR ARRANGEMENT)
- \* AIR CONDITIONING SERVICE

**ALL VEHICLE WORK  
UNDERTAKEN**



**FREE collection and delivery**

*Quality Vehicle maintenance  
adjusted to suit your pocket*

Free collection and delivery applies to the local area only



# FLOWER FESTIVAL

**YELLING CHURCH**  
Our theme: Food and Festivals

---

**AUGUST BANK HOLIDAY WEEKEND**

<b>SUNDAY 27TH AUGUST</b> 10 am to 6 pm Service at 6 pm	<b>MONDAY 28TH AUGUST</b> 10 am to 5 pm
---	--

Refreshments and light lunches in the Village Hall  
 10.30 am to 5 pm on both days  
 Stalls on Monday from 12 noon

---

**ENTRANCE FREE**  
 Donations to church funds welcome

[yellingvillage.co.uk/holy-cross-church](http://yellingvillage.co.uk/holy-cross-church)



# MARK STEELE

ALL FORMS OF GENERAL BUILDING RENOVATION  
AND DECORATING WORK CARRIED OUT

**07831 550189**

**or**

**01223 264710**

Orchard End Church Lane  
Kingston Cambridge CB23 2NG





## Papworth Team Ministry (C of E)

The Papworth Team Ministry Team Office: (Closed in August)

Lower Pendrill Court  
Ermine Street North  
Papworth Everard  
CB23 3UY

Email: [papworthteamministryoffice@gmail.com](mailto:papworthteamministryoffice@gmail.com)

Web: [www.papworthteamchurches.org](http://www.papworthteamchurches.org)

Our Team Administrator, Chris Westgarth, works in the office normally on Monday, Tuesday, Thursday and Friday mornings; serving the parishes of Bourn, Boxworth, Caxton, Conington, Croxton, Elsworth, Eltisley, Graveley with Papworth St Agnes, Kingston, Knapwell, Longstowe, Papworth Everard, Toseland and Yelling.

For enquires about weddings, baptisms, funerals and general parish matters, please contact Chris (as above), visit the website or speak to one of our clergy...

> The Revd Nigel di Castiglione, Team Rector – 07770 697240 - 01954 267241

> The Revd Stephen Day, Team Vicar - 01954 264226

### ***CLEAN DIRECT*** ***DOMESTIC & SPRING CLEANING SERVICES***

**WE PROVIDE AN IN DEPTH FORTNIGHTLY OR  
MONTHLY SERVICE**

**INCLUDING:**

**COOKERS DEGREASED, BATHROOMS DESCALED,  
ONE-OFFS WELCOME, MOVING IN OR OUT UNDERTAKEN  
EXCELLENT REFERENCES  
FOR FURTHER DETAILS**

**TELEPHONE "CD" ON HUNTINGDON (01480) 412875**

## **SIMON ROBINSON & SON**

**QUALITY BESPOKE PICTURE FRAMERS**

Professional, Friendly Service

Wide Selection of Frames

Conservation Materials Used

Speciality Glass Available

Artwork/Photography • Needlework/Tapestry

Custom Mirrors • Laminating

Unusual Objects Framed

Limited Edition Prints Available

**Tel. 01223 873123**

**lester@robinsonframes.co.uk**

**www.robinsonframes.co.uk**

**STUDIO 6, PENN FARM, HARSTON RD,  
HASLINGFIELD, CAMBRIDGE. CB23 1JZ  
(AMPLE PARKING)**

### **Bourn Surgery Opening Times**

tel. 01954 719469

#### ***Reception***

Mon-Fri 8:30-1:00 & 1:30-6:00

(Out of hours for duty doctor's number  
ring: 01954 719313)

**EMERGENCY 01954 464242**

#### ***Dispensary***

Mon-Fri 9:00-10:00 & 4:00-6:00

01954 718101

### **Comberton Surgery Opening Times**

tel. 01223 262500

#### ***Reception***

Mon-Fri 8:15-12:30 & 1:30-6:30

(Out of hours for duty doctor's number  
ring: 01223 262500 or 262579)

**EMERGENCY 01223 464242**

#### ***Dispensary***

Mon-Fri 8:30-12:30 & 1:30-6:30

### **Commercial advertising rates in this magazine:**

- Full page: £8 (£80 for 12 issues)
- Half page: £5 (£50 for 12 issues)
- Quarter page: £3 (£30 for 12 issues)

Other sizes by arrangement. Reduced rates for Kingston residents

## Telephone numbers

<b>Addenbrooke's A&amp;E</b>	01223 217118
<b>Addenbrooke's switchboard</b>	01223 245151
<b>Age UK</b> (Information and Advice line)	0800 1696565
<b>Anglian Water</b> (sewage)	08457 145145
<b>Ashcroft Vet Surgery</b> 169 St. Neots Rd, Hardwick	01954 210250
<b>Cambridge Rail Station</b> general inquiries	0845 7484950
<b>Cambridge Water</b>	01223 70605
<b>Camdoc</b> (out of hours)	01223 464242
<b>Chinese</b> , Fish and Chips 2 High St. Toft	01223 263337
<b>Citizens Advice Bureau</b>	01223 222660
<b>Crimestoppers</b> (anonymous crime reporting)	0800 555111
<b>Drs. Parker, Mills, Shepherd, Wheatley and Kent</b>	
58 Green End, Comberton	appointments 01223 262500
	prescriptions 01223 262399
<b>Dr. Redwood &amp; Partners, Bourn Surgery</b>	
	appointments 01954 719469
	emergencies 01954 719313
<b>Electricity</b> (emergency)	0800 783838
<b>Health-Child &amp; Family Team</b> (Community Health Office)	
Comberton Road, Toft	01223 264460
<b>Indian</b> , The Hoops Gt. Eversden	01223 264443
<b>Italian</b> , The Pergola, Harlton	01223 260005
<b>Jetlink</b> (to Stansted, Heathrow, Luton, Gatwick)	08705 747757
<b>Magazine Editor</b> Peter Holly	01223 264556
<b>National Rail Enquiries</b>	08457 484950
<b>Neighbourhood Watch</b> (Peter Stokes)	01223 262207
<b>NHS 24hr health Advice Line</b> (talk to a nurse/doctor)	111
<b>Parish Council Chairman</b> (Tim Fitzjohn)	01223 263446
<b>Parish Council Clerk</b> (Peter Stokes)	01223 262207
<b>Park and Ride</b>	01223 845561
<b>Police non-emergency (our PCSO)</b>	101
<b>Road repair</b>	01223 833717
<b>Rosie Maternity Hospital</b>	01223 217617
<b>Samaritans</b>	01223 364455
<b>SC District Council</b> (Local Councillor Tumi Hawkins)	01954 210840
<b>South Cambridgeshire District Council</b>	03450 450500
<b>Stagecoach</b> (Cambus) information 8am to 8pm	0870 6082608
<b>Stansted Airport</b>	0870 0000303
<b>Streetlight failure reporting</b>	0800 7838247

**Papworth Team**

<b>Rev Stephen Day</b> (1st contact)	01954 264226
<b>Rev Nigel di Castiglione</b> (Team Rector)	01954 267241 or 0777 0697240 Email: <a href="mailto:nigel.dicastiglione@gmail.com">nigel.dicastiglione@gmail.com</a>
<b>Rev Paul Gildersleve</b>	01954 713989
<b>Rev Nigel Pearson</b>	01954 719637

**Churchwarden Peter Reynolds**

**Jack Diggle**

**PCC**

**Janet Clear** (Secretary)

**Linda Rimmer** (Treasurer)

<b>Parish Council</b>	<b>Tim Fitzjohn</b> (Chairman, Village Hall Management Committee representative) <a href="mailto:tfitzjohn@btinternet.com">tfitzjohn@btinternet.com</a> <b>Julie Conder</b> (Finance, Webmaster)	01223 263446
-----------------------	--	--------------

**James Clear** (Vice-Chairman, Open Spaces Officer)

<b>Peter Stokes</b> (Clerk) <a href="mailto:kingstonpc.cambridge@gmail.com">kingstonpc.cambridge@gmail.com</a> <b>Trish Dunlop</b> (Councillor, Footpaths Officer) <b>Keith Tan</b> (Councillor)	01223 262207
---	--------------

<b>Village Hall MC</b>	<b>Mark Stalham</b> (Chairman) <a href="mailto:mark.stalham@niab.com">mark.stalham@niab.com</a> <b>Chris Reid</b> (Treasurer)	01223 263510
------------------------	---	--------------

**Sarah Wright** (Secretary)  
[kingstonvillagehall@gmail.com](mailto:kingstonvillagehall@gmail.com)

**Committee members: Pat Draper, Katherine Reid, Peter Stokes, Suzy Stokes, Paul Wright, Ron Leslie, Henrietta Burbridge, Paige Toon, John Easy, Lee Steele**